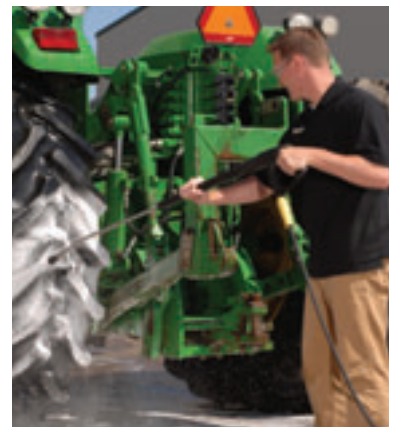
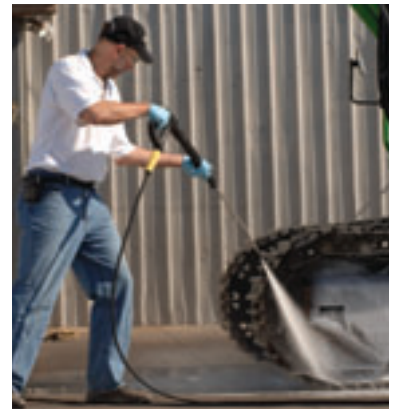


Mid-Class Electric-Powered Cold Water Pressure Washer for Commercial Applications

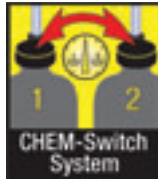
5
YEAR PUMP
WARRANTY



Mid-Class Electric-Powered Cold Water Pressure Washer With Low-Speed 4-Pole Motor and Patented Direct-Drive Axial Pump

Kärcher's cold-water mid-class models are robust 4-pole, air-cooled machines built to withstand long periods of operation in all-purpose commercial applications. Mid-class models feature Kärcher's unique Chem-Switch system which allows users to change from one cleaning agent to another without interruption. Due to their vertical upright design, these units take up surprisingly little space. Models come with user-friendly features such as on-gun variable water flow control, complete trigger shutoff, and convenient triple changeover nozzle. Machines are ETL certified to UL and CSA safety standards.

- Complete Trigger Shutoff
- Patented Commercial Axial Pump
- Chem-Switch Soap Dispensing
- Triple Change-over Nozzle



Innovative 2-tank system allows for easy switching between soap containers without interruption



Dimensions:
18"L x 16"W x 40"H



ServoControl
Water flow and pressure can be infinitely varied by rotating the ServoControl band on the trigger gun

- Kärcher's patented **motor-pump unit** is integrated in a single housing, ensuring highly efficient energy transfer
- Low-speed, **4-pole, air-cooled motor** runs quieter and cooler than conventional motors thus prolonging its service life
- Pressure-controlled **auto start/stop** ensures motor and pump shut down automatically when trigger gun is released
- **Upright design** means smaller footprint and easier storage
- Rear **cable/hose rack** provides added convenience
- Ergonomic Easy-Press **trigger gun** is designed for extended use and features soft grips to reduce operator fatigue
- Stainless steel **spray lance** rotates 360° under pressure
- **ServoControl** provides precise on-gun adjustment of water flow during operation
- **Triple nozzle** features touchless changeover between pencil jet, fan spray, and low-pressure chemical application
- **Oil level** can be checked with an external sight gauge
- Many **safety features**, including pressure relief valve and **ETL certification** to UL and CSA standards

TYPICAL APPLICATIONS

- Municipal Services
- Industrial
- Hospitality
- Transportation
- Construction

WHY KÄRCHER



Kärcher is the most trusted name in pressure washers—a fact confirmed when Kärcher was the only brand

selected to clean the famous Mount Rushmore National Monument in 2005.

Founder Alfred Kärcher invented hot water pressure washing in 1950. Today, as the world's largest manufacturer of pressure washers, Kärcher is the recognized innovative leader in the industry with nearly 300 patents.

- Unique **Chem-Switch** system allows operator to switch between two on-board detergent tanks without interruption; includes precise two-way **metering valve** to accurately vary detergent volume
- Robust, three-piston **axial pump** features detergent-resistant brass cylinder head and stainless steel valves; pump is protected by pressure switch and overflow valve
- Built-in **motor protection** against voltage fluctuations and excessive temperatures
- Kink-free, 33-ft. high-pressure **hose** is easy to wind, with integrated connection inside the gun which swivels under full pressure
- Single-phase unit features **ground-fault circuit interrupter (GFCI)** for operator safety

Model	Order No.	GPM	PSI	HP	Electrical	Amps	Pump	Ship Wt
HD 3.0/20-4M Ea	1.524-110.0	1.1-3.0	300-2000	4.7	230V / 1ph	20	Kärcher Axial	125 lbs
HD 3.8/22-4M Eb	1.524-202.0	1.1-3.8	300-2200	6.4	230V / 3ph	15	Kärcher Axial	125 lbs